

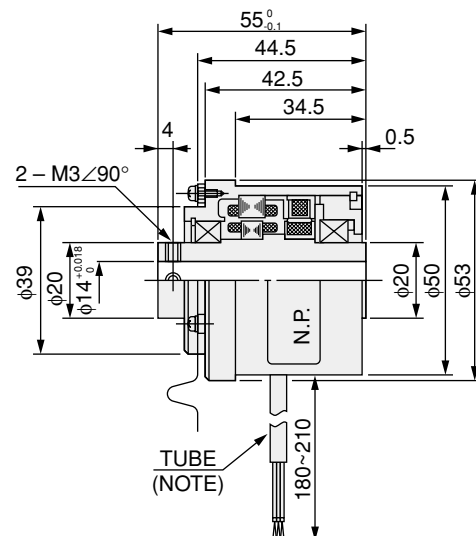
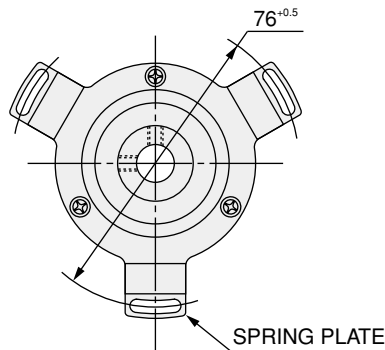
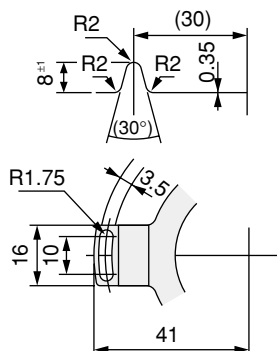
SIZE		21	
Model No.		TS2641N11E64	TS2651N111E78
Type		BRX	BRT
Primary		R1-R2	S1-S3, S2-S4
Input Voltage/Frequency		7Vrms 10kHz	3.5Vrms 4kHz
Transformation Ratio		0.5 ± 5%	0.3 ± 5%
Electrical Error		±10' Max.	±10' Max.
Null Voltage		20mVrms Max.	—
Phase Shift		-5° Nom.	—
Impedance	Z <sub>Ro</sub>	190Ω	51+j90Ω
	Z <sub>Rs</sub>	—	44+j76Ω
	Z <sub>so</sub>	300Ω	102+j150Ω
	Z <sub>ss</sub>	270Ω	—
Operating Temperature		-10 ~ +100°C	-10 ~ +150°C
Max. Operating Speed		83.3s <sup>-1</sup>	133.3s <sup>-1</sup>
Mass		0.3kg	0.305kg
Output Type		Normal	$E_{R1-R2}=K(-E_{S1-S2} \sin \theta - E_{S2-S4} \cos \theta)$

### OUTLINE

(DIMENSION : mm)

SIZE 21 TS2641N11E64, TS2651N111E78

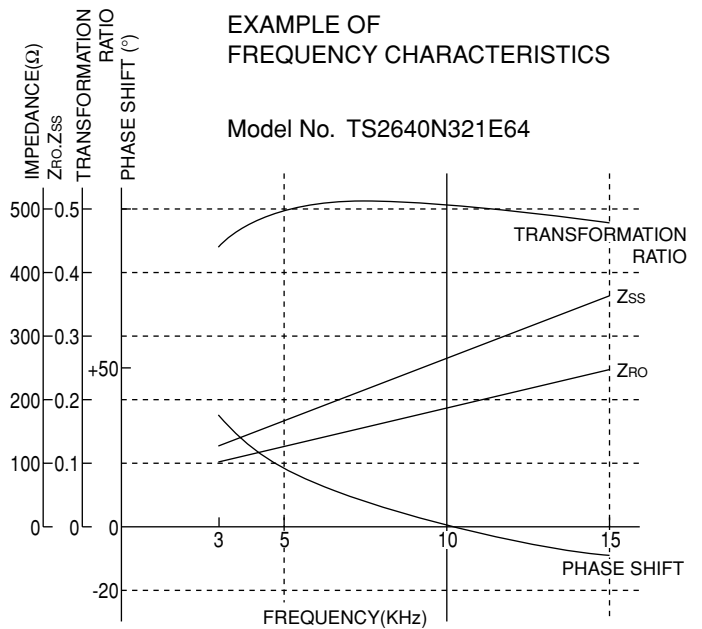
#### DETAIL OF SPRING PLATE



NOTE TS2641N11E64 : WITHOUT TUBE  
TS2651N111E78 : WITH TUBE

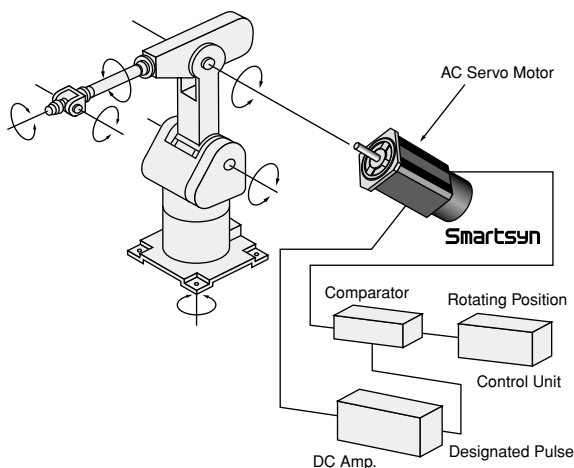
## APPLICATION NOTES

- The supply voltage is a rated value, and a resolver can accept a voltage from 3V to approx. 1.2 times as high as the rating. However, the supply frequency should only be altered within  $\pm 5\%$  lest it should affect the accuracy. Electrical parameters largely vary as the frequency varies as shown on the right.
- When a noise source is in vicinity, or when signal transfer distance is long, twisted/shielded pair cables should be used. When a noise still exists on the signals, they should be received by a differential amplifier.
- In BRX resolver, the two output voltages should be connected to the same amount of loads each other, or the voltages will get disproportionate, thus affect the accuracy.
- When an intense magnetic field surrounds a resolver, it may not work properly with its magnetic flux affected.
- When a resolver is used in a high humidity as close to 100% Rh for a long time, waterproof structure should be considered lest its insulation materials should deteriorate.
- All resolvers in the catalog are 1 $\times$  ( 2 poles) resolvers. For winding modifications to other speeds, please consult us.

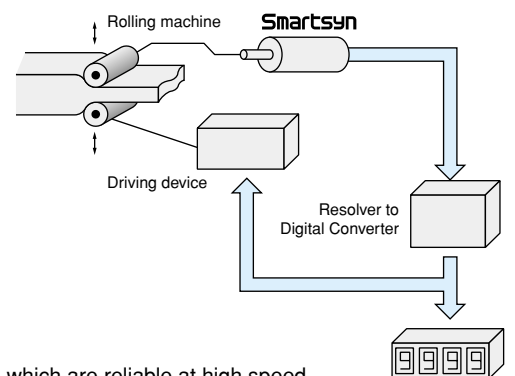


## APPLICATIONS

- For Driving Robot Hand and Body.



- Applicable to the roller positioning control of rolling mills.



- Smartsyn resolvers which are reliable at high speed are suitable for numerical control systems.

